



# AGR3 Polyclonal Antibody

<b>Catalog No</b>	YP-Ab-00294
<b>Isotype</b>	IgG
<b>Reactivity</b>	Human;Mouse
<b>Applications</b>	IHC;IF;ELISA
<b>Gene Name</b>	AGR3
<b>Protein Name</b>	Anterior gradient protein 3 homolog
<b>Immunogen</b>	The antiserum was produced against synthesized peptide derived from human AGR3. AA range:1-50
<b>Specificity</b>	AGR3 Polyclonal Antibody detects endogenous levels of AGR3 protein.
<b>Formulation</b>	Liquid in PBS containing 50% glycerol, 0.5% BSA and 0.02% sodium azide.
<b>Source</b>	Polyclonal, Rabbit,IgG
<b>Purification</b>	The antibody was affinity-purified from rabbit antiserum by affinity-chromatography using epitope-specific immunogen.
<b>Dilution</b>	Immunohistochemistry: 1/100 - 1/300. Immunofluorescence: 1/200 - 1/1000. ELISA: 1/5000. Not yet tested in other applications.
<b>Concentration</b>	1 mg/ml
<b>Purity</b>	≥90%
<b>Storage Stability</b>	-20°C/1 year
<b>Synonyms</b>	AGR3; BCMP11; Anterior gradient protein 3 homolog; AG-3; AG3; hAG-3; Breast cancer membrane protein 11
<b>Observed Band</b>	
<b>Cell Pathway</b>	Endoplasmic reticulum . Found in the cytoplasm, which could include the endoplasmic reticulum. .
<b>Tissue Specificity</b>	Expressed in the lung, in the ciliated cells of the airway epithelium (PubMed:25751668). Expression increased with differentiation of airway epithelial cells (PubMed:25751668). Not detected in the mucous cells (PubMed:25751668). Expressed in ciliated cells in the oviduct (PubMed:26170690). Also detected in stomach, colon, prostate and liver (PubMed:25751668). Expressed in breast, ovary, prostate and liver cancer (PubMed:26170690). Expression is associated with the level of differentiation of breast cancer (at protein level) (PubMed:26170690).
<b>Function</b>	similarity:Belongs to the AGR family.,subunit:Interacts with LYPD3 and alpha-dystroglycan.,
<b>Background</b>	similarity:Belongs to the AGR family.,subunit:Interacts with LYPD3 and alpha-dystroglycan.,

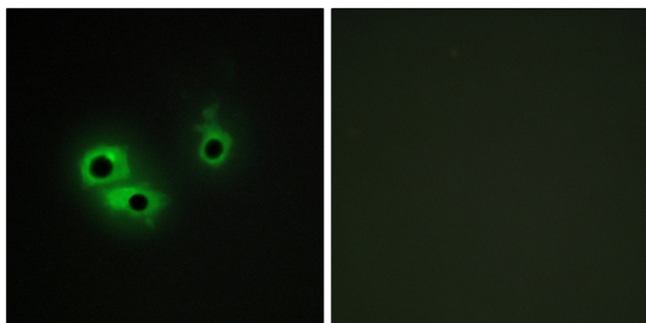
**matters needing attention**

Avoid repeated freezing and thawing!

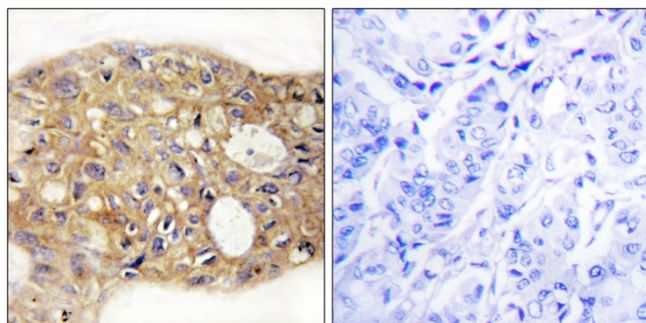
**Usage suggestions**

This product can be used in immunological reaction related experiments. For more information, please consult technical personnel.

## Products Images



Immunofluorescence analysis of COS7 cells, using AGR3 Antibody. The picture on the right is blocked with the synthesized peptide.



Immunohistochemistry analysis of paraffin-embedded human breast carcinoma tissue, using AGR3 Antibody. The picture on the right is blocked with the synthesized peptide.